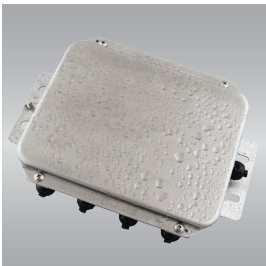


BJS Industrial Junction Boxes

Precise, Stainless steel and Waterproof



Typical Applications

- High capacity scales
- Weighbridges
- Industrial weighing applications
- Weighing in wet and hygienic environments
- Weighing systems under lightning risk



Features

- Up to 8 load cells connection
- Corner trimming by high long term stable components
- Stainless steel housing
- IP67 waterproof protection
- Easy eccentricity adjustment
- Doesn't distort the signal balance of the matched load cells



Heavy Industrial Products

- These instruments are designed for heavy industrial environments
- IP67 stainless steel housing
- Wide operating temperature range
- Lightning protection increases your system's reliability in long term.
- Junction box with metal glands are available.







The scale accuracy do not only depend on the quality of the indicator and load cell. The Junction box is the third very important instrument to determine the scale accuracy. Precision BJS series junction boxes are designed to use in every kind of industrial weighing applications including weigh-bridges, tank scales, silo weighing systems, conveyor scales and high capacity scales etc. Components of Baykon junction boxes has been carefully selected very sensitively to ensure high accuracy over a long life.

Baykon BJS series junction boxes are produced the most accurate output from matched load cells to high unbalanced load cells. The signal accuracy of the matched load cells does not changed because of the electronic circuitry in the junction box.

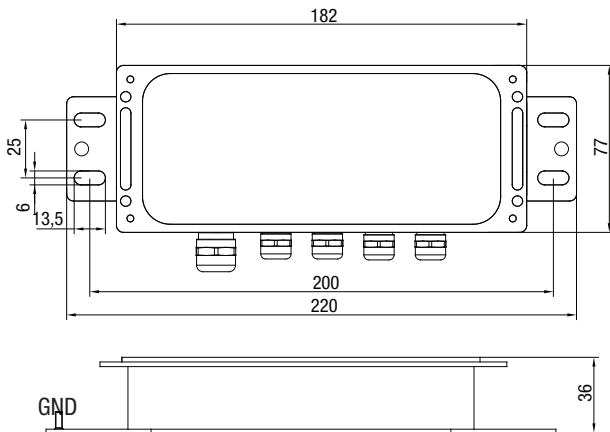
The scales equipped with BJS junction boxes can be used in all kind of industrial areas up to wet and hygienic environments.

BJS Industrial Junction Boxes

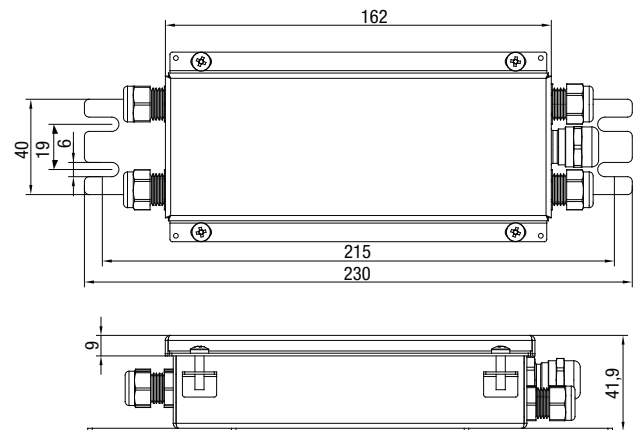
				
	BJS-04T	BJS-04P	BJS-04N	BJS-08N
Load cell quantity		Up to 4		Up to 8
Lightning protection		No		Yes
Eccentricity adjustment		Yes		
Load cell impedance		Between 350 Ω - 1200 Ω for eccentricity adjustment		
External grounding screw	Yes	Via mounting screw		Yes
Glands		4x PG7 and 1 X PG9 Polyamide PA6 V2, Black, IP68		9 x PG9 Polyamide PA6V2, Black, IP68
Cable diameters		Load cell cables: 3 - 6.5 mm; Instrument cable: 4 - 8 mm		
Holes for NAWI sealing		Yes		
Air ventilation, IP67		No		Yes
Enclosure & Protection		Stainless steel, IP67		
Operating temperature range		-15 to +70°C		
Humidity		90% RH max, non condensing		
Weight (packed)	400 g	550 g	550 g	1200 g
Options				
Metal gland		Yes		

Dimensions

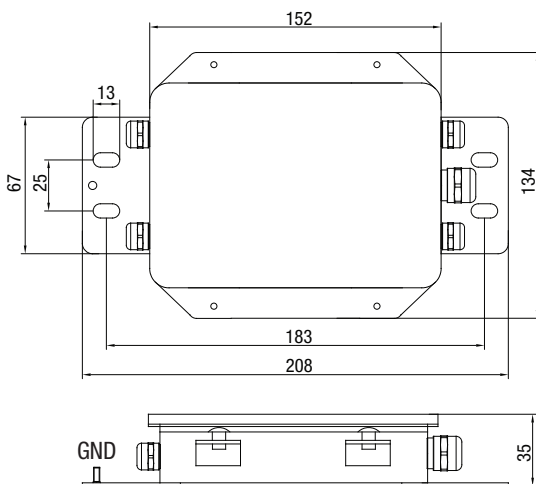
BJS-04T



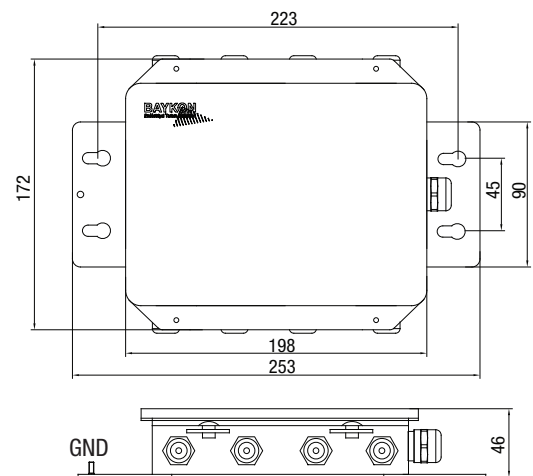
BJS-04P



BJS-04N



BJS-08N



(Specifications are subject to change without notice. 01 -09 / 2020)